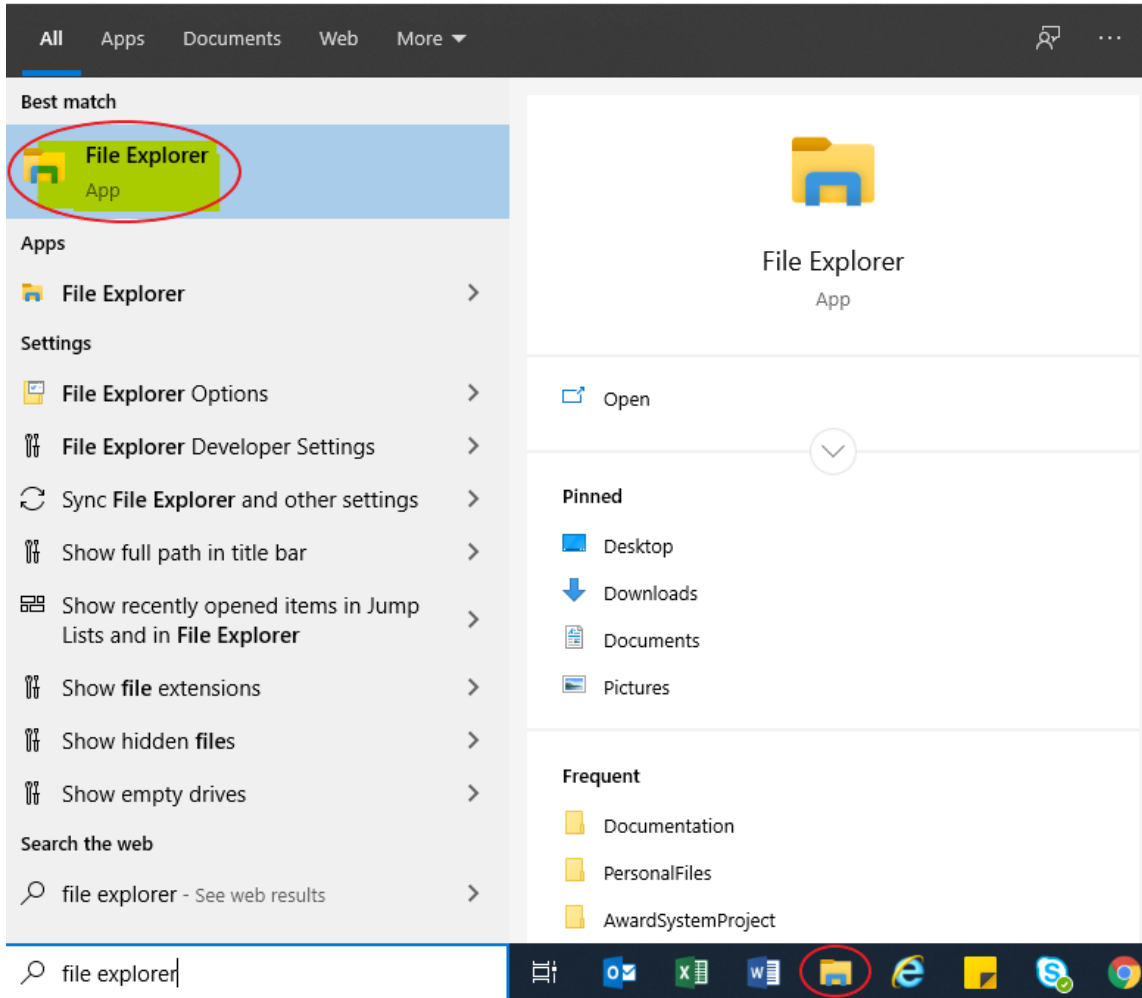


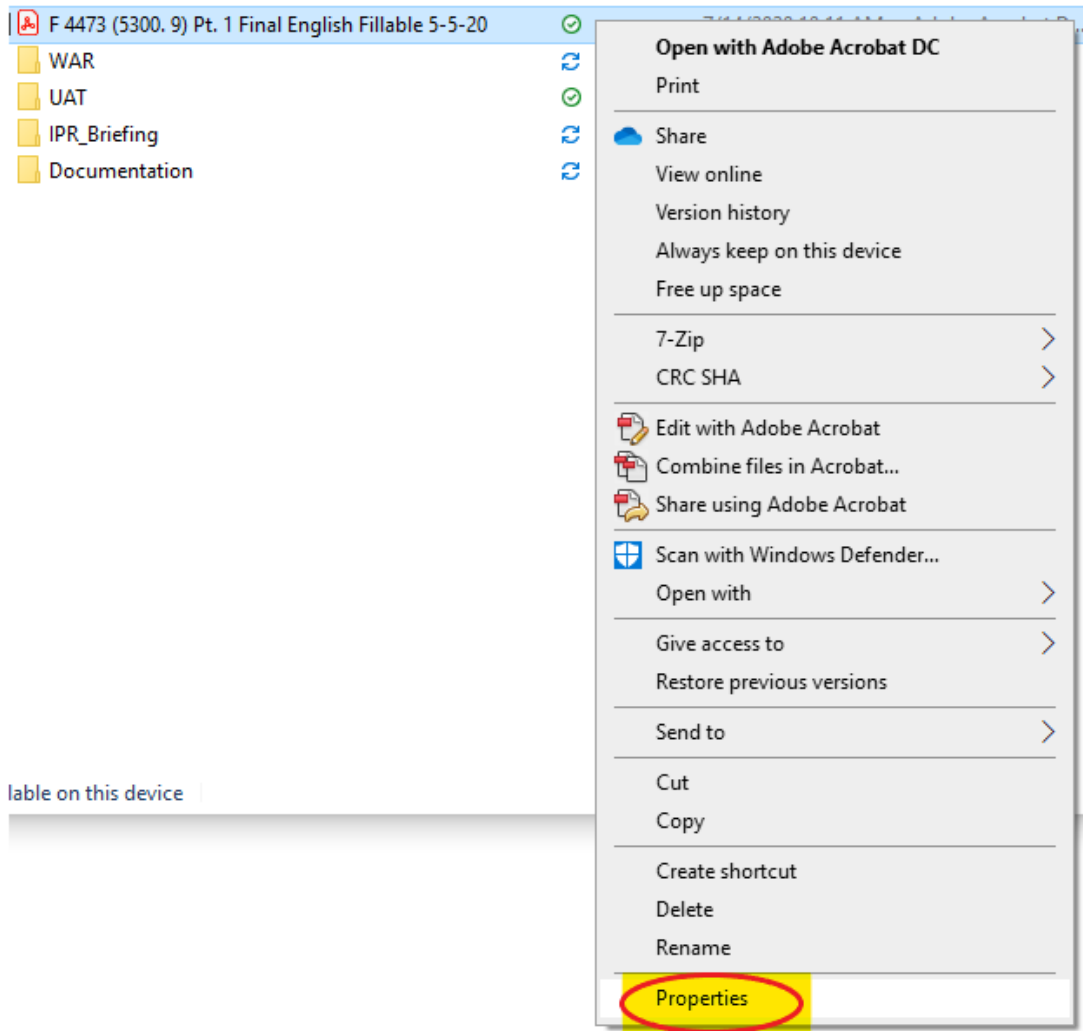
# E4473 Application FAQ

## How to change default reader to Adobe Acrobat Reader DC

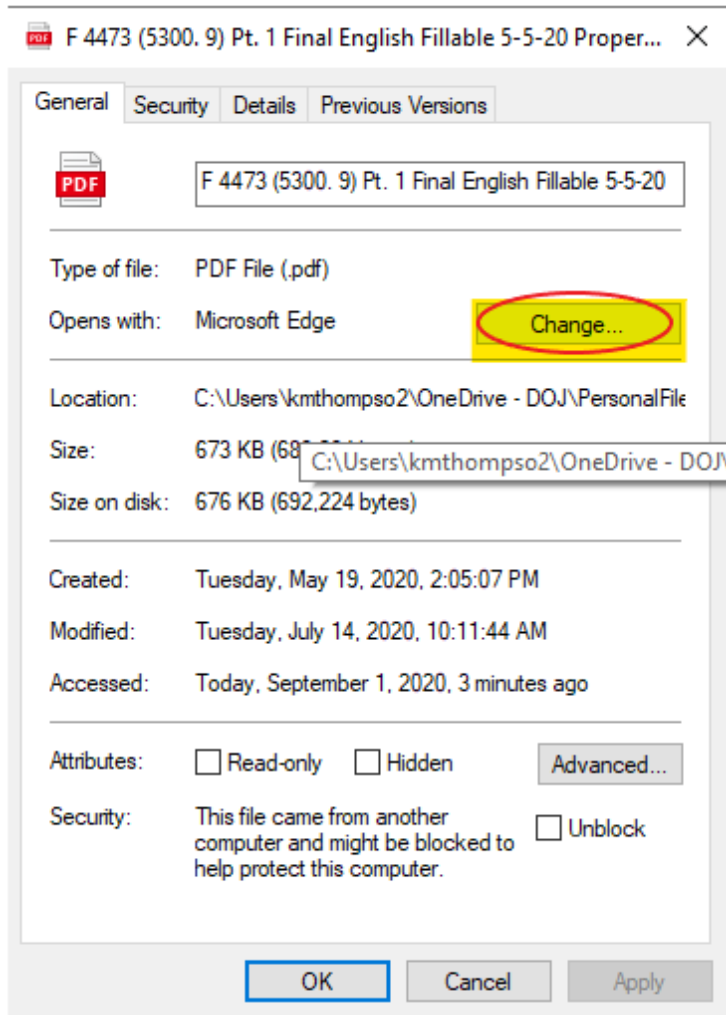
In the Windows search box, type “**File Explorer**” and open the *File Explorer* application.



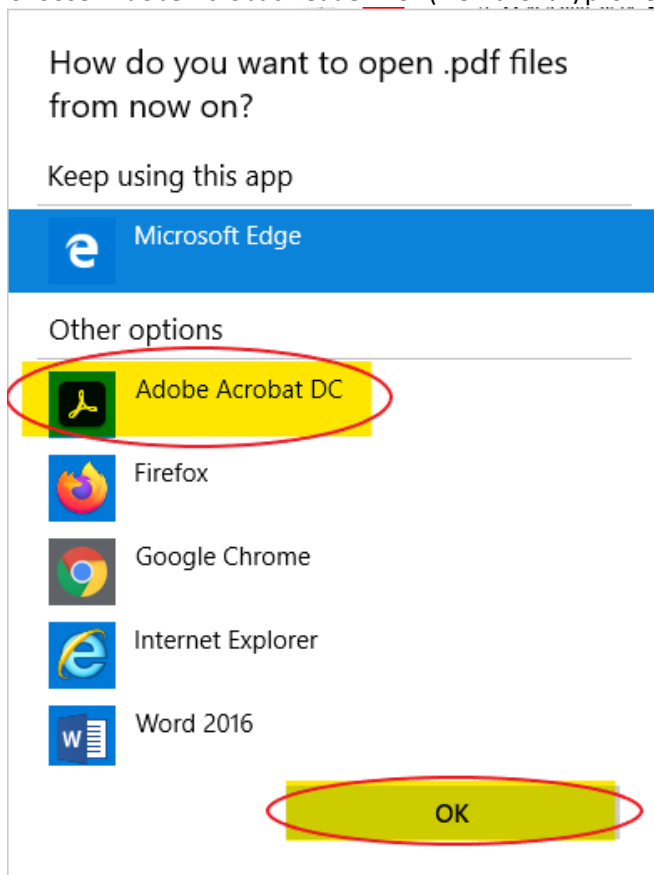
In Windows Explorer, right-click on any PDF file and choose ***“Properties”***.



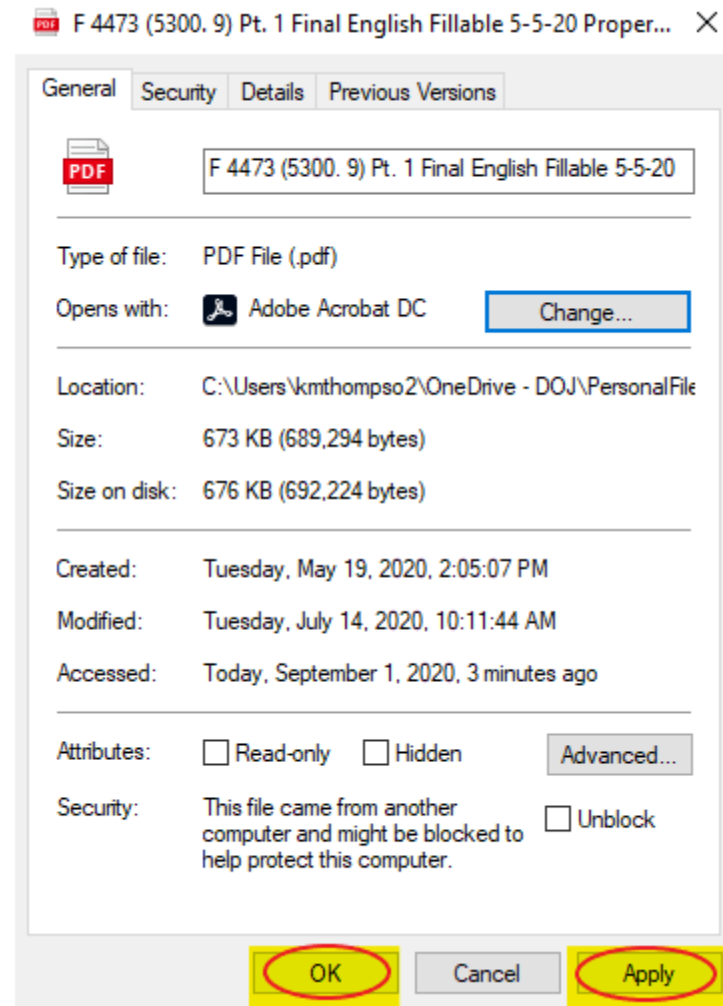
In the General section, where it says "Opens with:", click the **"Change"** button.



Choose "**Adobe Acrobat Reader DC**" (NOT the full/pro version of Adobe Acrobat), then click **OK**.



Click **Apply** and click **OK**.



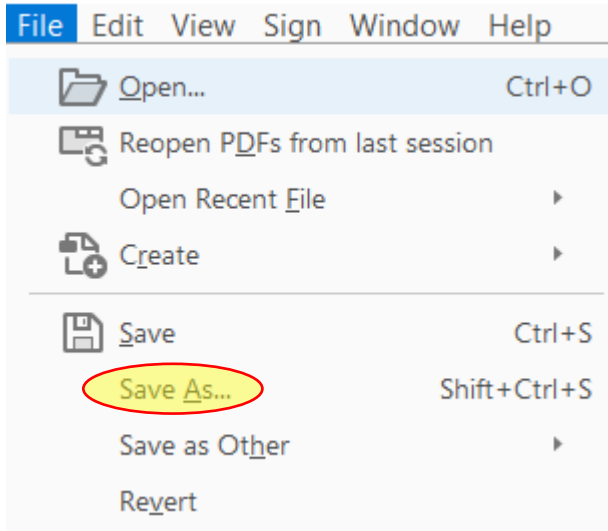
## How to print e4473 PDF using Windows 7

**Note:** *If using an older version of Windows, to print a completed ATF Form 4473, one must save PDF file to their computer first. Then, open the saved file and print the form.*

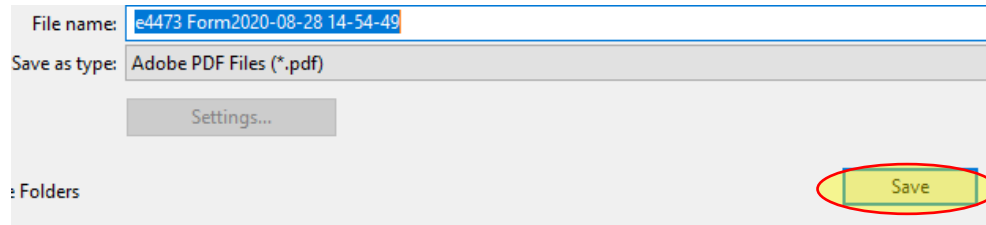
While in the e4473 application, click “**Preview Form(s)**” or the “**Print**”



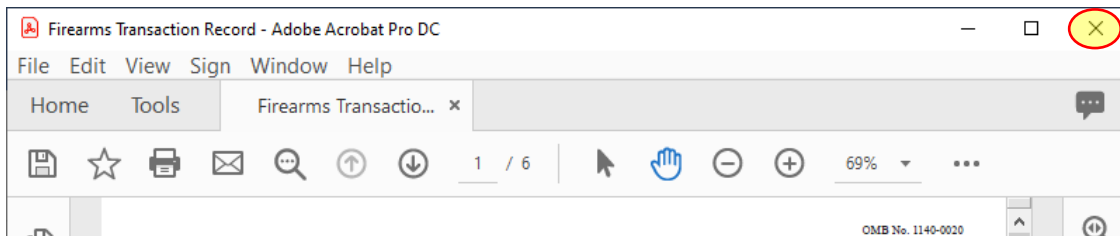
Adobe Acrobat Reader DC will open your PDF. Click “File” > “Save As..”



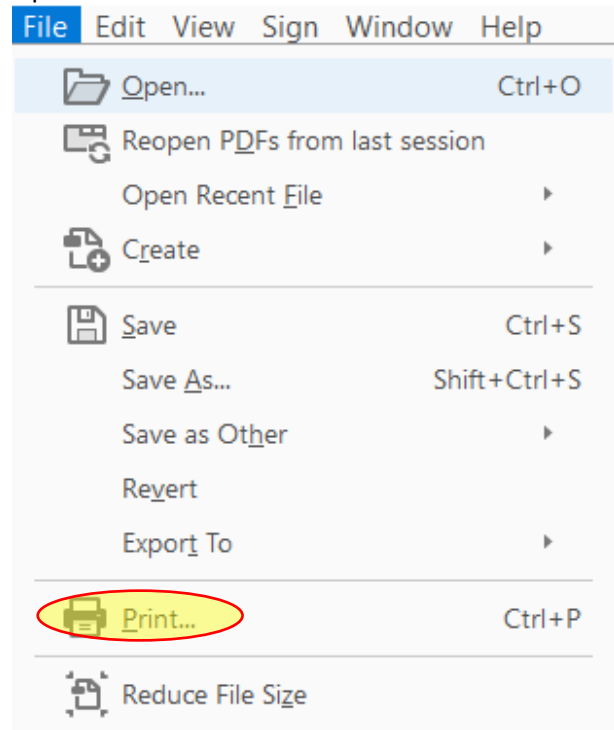
Click “Save”.



Close Adobe Acrobat Reader DC.



Open the PDF file and click “File”>”Print”



## How to generate the Multiple Sale or Other Disposition of Rifles

To generate a multiple sale or other disposition of rifles, a user or FFL must enter “Rifle” as the **Type** in Section A. When a FFL has entered more than two firearms identified as “Rifle” in the **Type** field, the multiple sale or other disposition of rifles will be generated.

**Note: Rifle must be spelled correctly for multiple sale or other disposition of rifles to generate. If there are more than two rifles, the form will be generated at the final print screen.**

### 1. Manufacturer and Importer \* ?

(If the manufacturer and importer are different, include both.)

Manufacturer \*

Smith & Wesson

Importer (if any)

### 2. Model (if designated) \* ?

AR-15

### 3. Serial Number \* ?

ABC123

### 4. Type \* ?

Rifle

## How to generate the Multiple Sale or Other Disposition of Pistols and Revolvers

To generate a multiple sale or other disposition of pistols and revolvers, a user or FFL must enter “Pistol”, “Revolver” or “Handgun” as the **Type** in Section A. When a FFL has entered more than two firearms identified as “Pistol”, “Revolver” or “Handgun” in the **Type** field, the multiple sale or other disposition of rifles will be generated.



**Note: Handgun, Pistol or Revolver must be spelled correctly for multiple sale or other disposition of pistols and revolvers to generate. If there are more than two pistols, handguns or revolvers, the form will be generated at the final print screen.**

1. Manufacturer and Importer \* ?

(If the manufacturer and importer are different, include both.)

Manufacturer \*

Glock

Importer (if any)

2. Model (if designated) \* ?

Glock 17

3. Serial Number \* ?

ABC123

4. Type \* ?

Handgun